

Peplink Balance 310X

Enterprise SD-WAN router for Medium Branches

peplink | PEPWAVE

Affordable High Performance

Balance 310X采用全GE端口，并提供2.5 Gbps的路由吞吐量。它提供了支持中小型企业运营所需的所有连接性。

2.5 Gbps
Of Throughput

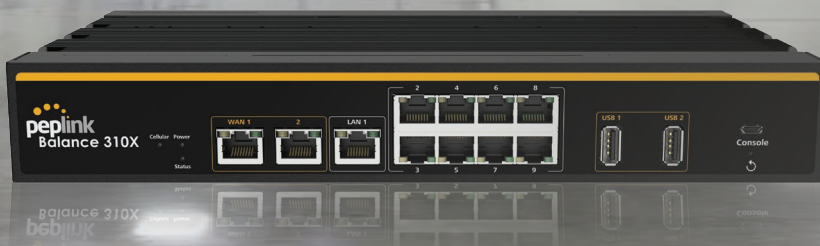


Unbreakable Connectivity with LTE

Balance 310X提供内置LTE功能，实现无缝故障切换。专利SpeedFusion技术结合多个连接，确保通话无抖动并实现高速传输。

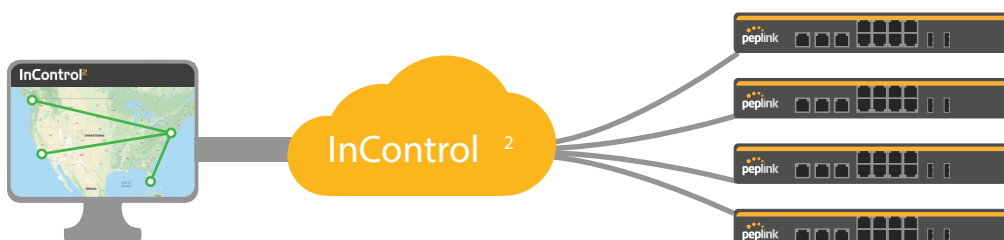


Rugged Industrial-Grade Design



采用无风扇设计和广泛的温度范围。将其投入苛刻的环境中长期运行无需担心。

Scalable Management



Balance 310X配备了InControl中央管理系统。轻松集中管理防火墙规则、出站策略VLAN、设备配置等。

Balance 310X



Specifications

WAN Interface	1x Embedded LTE-A-PRO Modem with Redundant SIM Slots 2x 10/100/1000M Ethernet 2x USB 2.0 Interface	Power Consumption	30W (max.)
LAN Interface	9x 10/100/1000M Ethernet	Dimensions	1.7 x 11.5 x 7.0 inches 43 x 292 x 177 mm
Router Throughput	2.5 Gbps	Weight	7.28 pounds 3.3 kg
PepVPN Throughput (No Encryption)	600 Mbps	Operating Temperature	-40° – 149 °F -40° – 65 °C
PepVPN Throughput (256-bit AES)	500 Mbps	Humidity	15% – 95% (non-condensing)
Cellular Data Rate® (Downlink/Uplink)	CAT-12: 600 Mbps/150 Mbps CAT-20: 2 Gbps/211 Mbps	Certifications	FCC, CE, RoHS
Recommended Users	50-500	Package Content	Balance 310X, 1x PSU 24V 2.5A (ACW-647), 2x or 4x LTE/5G Antennas (ACW-234) 1x GPS Antenna (ACW-232), Ear L-Mounts kit (ACW-513), Rubber Foot Pad Set, Grounding Cable
Cellular and GPS Antenna Connectors	2x SMA Antenna Connectors (for CAT-12) 4x SMA Antenna Connectors (for CAT-20) 1x SMA GPS Antenna Connector	Warranty	1-year Limited Warranty
Power Input	Power Din DC: 12V – 30V		

Ordering information

Product Code	Carrier/ Category	Embedded Modems	4G Bands	3G Bands
BPL-310X-LTEA-R-T	America / CAT-12	1	B1, B2, B3, B4, B5, B7, B8, B9, B12, B13, B14, B18, B19, B20, B26, B29, B30, B32, B41, B42, B43, B46, B48, B66	B1, B2, B4, B5, B6, B8, B9, B19
BPL-310X-LTEA-D-T	APAC & EMEA / CAT-12	1	B1, B2, B3, B4, B5, B7, B8, B9, B12, B13, B14, B17, B18, B19, B20, B21, B25, B26, B28, B29, B30, B32, B38, B39, B40, B41, B66	B1, B2, B3, B4, B5, B8, B9, B19
BPL-310X-GLTE-S-T	Global / FirstNet / CAT-20	1	B1, B2, B3, B4, B5, B7, B8, B12, B13, B14, B17, B18, B19, B20, B25, B26, B28, B29, B30, B32, B34, B38, B39, B40, B41, B42, B46 (LAA), B48, B66, B71	B1, BHSPA+/WCDMA: B1, B2, B3, B4, B5, B6, B8, B9, B19

®Theoretical maximum data rates

Expansion Module for B310X



Specifications

Interface	1x Embedded Cellular Modems with Redundant SIM Slots	Dimensions	0.9 x 11.5 x 3.5 inches 22 x 292 x 88 mm
Antenna Connectors	4x SMA Antenna Connectors, 1x SMA GPS Antenna Connector	Weight	2.2 pounds 1 kg
Cellular Data Rate® (Downlink/Uplink)	CAT-20: 2 Gbps/211 Mbps		

Ordering information

Product Code	Description	Embedded Modems	Carrier/Categories	4G Bands	3G Bands
EXM-310X-GLTE-S	Expansion Module for B310X with 1x LTE-A Pro (CAT-20) modem	1	Global / CAT-20	B1, B2, B3, B4, B5, B7, B8, B12, B13, B14, B17, B18, B19, B20, B25, B26, B28, B29, B30, B32, B34, B38, B39, B40, B41, B42, B46 (LAA), B48, B66, B71	HSPA+/WCDMA: B1, B2, B3, B3, B4, B5, B6, B8, B9, B19

®Theoretical maximum data rates